

DEFULL

DEFULLA/DEFULLB/DEFULLU/DEFULLT

Full-Text German Applications, Patents, Utility Models And Translations of European Patent Documents

■ Contents:

Full-Text patent documents published by the German Patent and Trademark Office.

DEFULL	Contains the full-text of German Patent Publications as outlined below:
DEFULLA	Contains the full-text of applications from 1987 forward.
DEFULLB	Contains the full-text of granted patents from 1987forward.
DEFULLU	Contains the full-text of granted utility models from January 2004 forward. Utility patents do not have a published application stage.
DEFULLT	Contains the German translations of European patent documents from February 2005 forward. German T publications do not contain abstracts or cited references.

Each records contains the bibliographic data, abstracts, claims, descriptions and cited references available for each record. The International Patent Classification of the patents is searchable.

Drawings are available.

■ Numbers of records :

DEFULL	more than 1,127,000 records
DEFULLA	12224
DEFULLB	5387
DEFULLU	4440
DEFULLT	7404

■ Updating :

Weekly

■ Language of records :

German

■ Cluster searching:

The DEFULL database belongs to the predefined PATENTS database cluster (FILE CL PATENTS or FI PATENTS).

■ SDI Profiles :

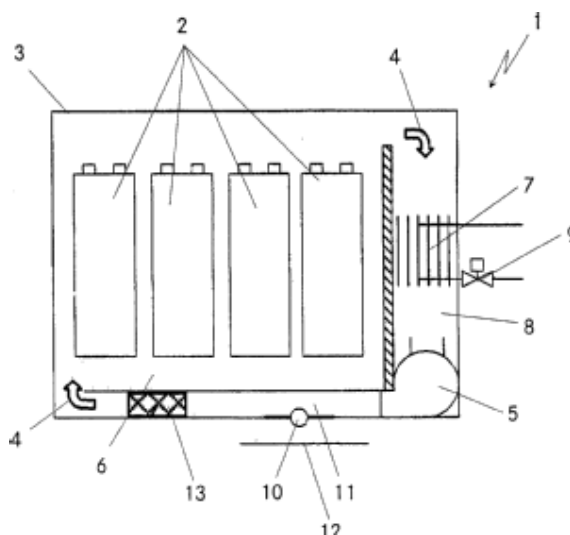
- Weekly
- Monthly

■ Producer :

German Patent and Trademark Office

Granted Patent

- 1 / 1 DEFULLB (1 / 1) - ©Questel.Orbit - image
- PN** - DE102004021280 B3 20050602 [DE102004021280]
- TI** - Vorrichtung zur Kuehlung von abwaermeerzeugenden elektrischen oder elektronischen Bauteilen und Verwendung der Vorrichtung
- IN** - Bamberger, Volker, Dipl.-Ing., 55566 Bad Sobernheim, DE
Soczka-Guth, Thomas, Dr., 89601 Schelklingen, DE
- PA** - DaimlerChrysler AG, 70567 Stuttgart, DE
- AP** - DE102004021280 20040429 [2004DE-10021280]
- DT** - Patentschrift
- IC1** - H01M-010/50
- NOTE** - Innerhalb von 3 Monaten nach Veroeffentlichung der Erteilung kann Einspruch erhoben werden.
- CT** - DE-195151211(A1)
- AB** - Die Vorrichtung dient zur Kuehlung von abwaermeerzeugenden elektrischen oder elektronischen Bauteilen. Die Bauteile sind dabei von einem Gehaeuse umgeben, welches mit einer Forderungseinrichtung zur Forderung eines Kuehlluftvolumenstromes durch das Gehaeuse versehen ist. Erfindungsgemaess ist der Kuehlluftvolumenstrom waehrend des Betriebs der abwaermeerzeugenden Bauteile zumindest zeitweise in waermeleitenden Kontakt mit einem Waermetauscher zu bringen, welcher seinerseits gekuehlt ist.
Die Vorrichtung kann beispielsweise zur Kuehlung von Batterien in Fahrzeugen Verwendung finden.
- MCLM** - 1. Vorrichtung zur Kuehlung von abwaermeerzeugenden elektrischen oder elektronischen Bauteilen, insbesondere von Batterien, mit einem die Bauteile umgebenden Gehaeuse, und mit einer Forderungseinrichtung zur Forderung eines Kuehlluftvolumenstromes durch das Gehaeuse, wobei der Kuehlluftvolumenstrom waehrend des Betriebs der abwaermeerzeugenden Bauteile zumindest zeitweise in waermeleitenden Kontakt mit einem gekuehlten Waermetauscher bringbar ist, dadurch gekennzeichnet, dass der Kuehlluftvolumenstrom (4) teilweise in dem Gehaeuse (3) zirkuliert und teilweise von ausserhalb des Gehaeuses (3) angesaugt und nach ausserhalb des Gehaeuses (3) abgegeben wird, wobei die Anteile mittels einer Ventileinrichtung (10) zueinander steuerbar sind.
- CLM** - 2. Vorrichtung nach Anspruch 1, dadurch gekennzeichnet, dass der Waermetauscher (7) durch ein sich im Bereich des Waermetauschers entspannendes Medium aktiv gekuehlt ist.
3. Vorrichtung nach Anspruch 1, dadurch gekennzeichnet, dass der Waermetauscher (7) durch ein in einem Kuehlkreislauf stromendes Medium gekuehlt ist.



© Questel.Orbit

Utility Model Patent

1 / 1 DEFULLU (1 / 1) - ©Questel.Orbit - image

PN - DE202004002448 U1 20050512 [DE202004002448]

TI - Mehrlagige Rahmenantenne insbesondere fuer ein Identifikationssystem mit Transponder und Lesegeraet

PA - Siemens AG, 80333 Muenchen, DE

AP - DE202004002448 20040216 [2004DE-20002448]

DT - Gebrauchsmusterschrift

IC1 - H01Q-007/00

IC2 - H04B-001/59 H05K-001/16 H05K-003/46

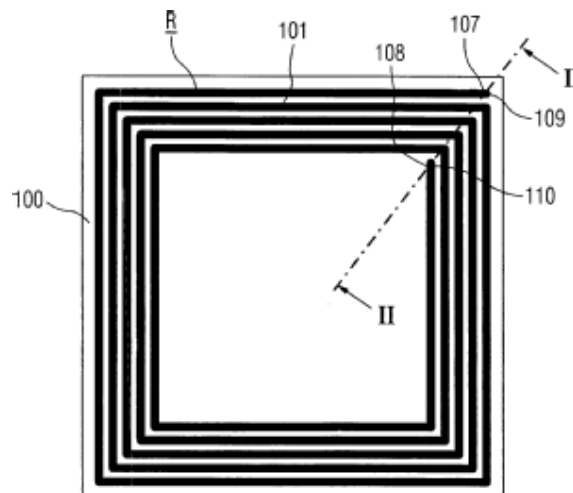
NOTE - Die folgenden Angaben sind den vom Anmelder eingereichten Unterlagen entnommen

CT - DE-468513(C); DE-430033(C); DE-100229801(A1); DE-298037501(U1); DE-691084202(T2)

AB - Hauptanspruch :
Rahmenantenne (R) mit mehreren Lagen von uebereinander liegend angeordneten, ringfoermigen Antennen (101-106), dadurch gekennzeichnet, dass die Lagen der uebereinander liegend angeordneten, ringfoermigen Antennen (101-106) parallel geschaltet sind.

MCLM - 1. Rahmenantenne (R) mit mehreren Lagen von uebereinander liegend angeordneten, ringfoermigen Antennen (101-106), dadurch gekennzeichnet, dass die Lagen der uebereinander liegend angeordneten, ringfoermigen Antennen (101-106) parallel geschaltet sind.

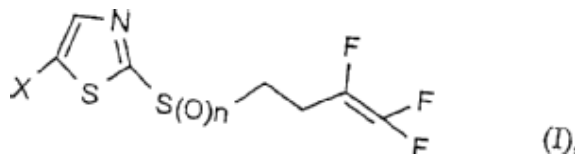
CLM - 2. Rahmenantenne (R) nach Anspruch 1, mit einer mehrlagigen Leiterplatte (100) deren Lagen mit ringfoermigen Antennen (101-106) belegt sind, und die ringfoermigen Antennen ueber mindestens eine Durchkontaktierung (109,110) durch die Lagen der Leiterplatte (100) parallel geschaltet sind.
3. Rahmenantenne (R) nach Anspruch 2, gekennzeichnet durch eine Multilager-Leiterplatte als mehrlagige Leiterplatte (100).
4. Rahmenantenne (R) nach Anspruch 1, 2 oder 3, dadurch gekennzeichnet, dass die ringfoermigen Antennen (101-106) Spiralantennen mit mehreren Windungen sind.
5. Rahmenantenne (R) nach einem der vorangegangenen Ansprueche, dadurch gekennzeichnet dass die ringfoermigen Antennen (101-106) auf den Lagen formgleich sind.
6. Rahmenantenne (R) nach Anspruch 5, dadurch gekennzeichnet, dass die ringfoermigen Antennen (101-106) auf den Lagen passgenau uebereinander liegen.
7. Rahmenantenne (R) nach einem der vorangegangenen Ansprueche, dadurch gekennzeichnet, dass die ringfoermigen Antennen (101-106) auf den Lagen gleiche Windungszahlen aufweisen...**display abbreviated**



© Questel.Orbit

T Document (Translation of EP patent)

- 4 / 4 DEFULLT (1 / 1) - ©Questel.Orbit - image
- PN** - DE60009511 T2 20050317 [DE60009511]
- TI** - NEMATIZIDE TRIFLUORBUTENE
- IN** - WATANABE, Yukiyo, Oyama-shi, Tochigi 323, JP
ISHIKAWA, Koichi, Oyama-shi, Tochigi 323-0822, JP
OTSU, Yuichi, Oyama-shi, Tochigi 323-0822, JP
SHIBUYA, Katsuhiko, Kawachi-gun, Tochigi 329-0433, JP
ABE, Takahisa, Sapporo-shi, Hokkaido 064-0952, JP
- PA** - Bayer CropScience K.K., Tokio/Tokyo, JP
- AP** - DE60009511 20000628 [2000DE-6009511]
- PR** - JP19163899 19990706 [1999JP-0191638]
- PPN** - WO01/002378 - 20010111 [WO200102378]
- PAP** - PCT/IB00/00868 20000628 [2000WO-IB00868]
- DT** - UEbersetzung der europaeischen Patentschrift
- IC1** - C07D-277/36
- IC2** - A01N-043/78
- DS** - AT BE CH CY DE DK ES FI FR GB GR IE IT LI LU MC NL PT SE
- RP** - Krieg, R., Dipl.-Biol. Dr.rer.nat., Pat.-Anw., 51377 Leverkusen
- NOTE** - Anmerkung: Innerhalb von neun Monaten nach der Bekanntmachung des Hinweises auf die Erteilung des europaeischen Patents kann jedermann beim Europaeischen Patentamt gegen das erteilte europaeische Patent Einspruch einlegen. Der Einspruch ist schriftlich einzureichen und zu begruenden. Er gilt erst als eingelegt, wenn die Einspruchsgebuehr entrichtet worden ist (Art. 99 (1) Europaeisches Patentuebereinkommen). Die UEbersetzung ist gemaess Artikel II Section 3 Abs. 1 IntPatUEG 1991 vom Patentinhaber eingereicht worden. Sie wurde vom Deutschen Patent- und Markenamt inhaltlich nicht geprueft.
- MCLM** - 1. Verbindungen der Formel (I): [Cf Figure] worin X Halogen und n 0, 1 oder 2 darstellen.
- CLM** - 2. Verbindungen der Formel (I) gemaess Anspruch 1, worin X Fluor, Chlor oder Brom und n 0 oder 2 darstellen.
3. Verbindungen der Formel (I) gemaess Anspruch 1 oder 2, worin X Chlor oder Brom und n 2 darstellen.
4. Verbindungen der Formel (I) gemaess einem der Ansprueche 1 bis 3, worin X Chlor darstellt.
5. Verfahren zur Herstellung von Verbindungen der Formel (I): [Cf Figure] worin x wie in den Anspruechen 1 bis 4 definiert ist und n 0 darstellt, dadurch gekennzeichnet, dass 2-(3,4,4-Trifluor-3-butenylthio)thiazol mit einem Halogenierungsagens, gegebenenfalls in der Gegenwart inerter Loesungsmittel, zur Reaktion gebracht wird....**display abbreviated**



© Questel.Orbit

Searching

Basic Index (default index)

Search by	Index	Search Hints	Examples
Terms from the Basic Index	/BI (default)	All the fields of the basic index are searchable without using a prefix. Search by: - single terms using boolean and proximity operators - phrases using implied adjacency Use limited and unlimited truncation. Left-hand truncation is available (? , #, +).	ELEKTRONISCH? AND KOMMUTIERT?? ELEKTRONISCH KOMMUTIERTER ELEKTRO+ +MOTOR
Words from the Title	/TI	Search by: - single terms using boolean and proximity operators - phrases using implied adjacency Use limited and unlimited truncation. Left-hand truncation is available (? , #, +).	/TI ELEKTRONISCH KOMMUTIERTER GLEICHSTROMMOTOR
Abstract Not applicable to DEFULLT	/AB	Search by: - single terms using boolean and proximity operators - phrases using implied adjacency Use limited and unlimited truncation. Left-hand truncation is available (? , #, +).	/AB BEDRUCKTEN SUBSTRAT
Description	/DESC	Search by: - single terms using boolean and proximity operators - phrases using implied adjacency Use limited and unlimited truncation. Left-hand truncation is available (? , #, +).	/DESC VERURSACHTE AXIALE
Main Claim	/MCLM	Search by: - single terms using boolean and proximity operators - phrases using implied adjacency Use limited and unlimited truncation. Left-hand truncation is available (? , #, +).	/MCLM BRUECKENELEMENT? TRANSISTOR?
Claims	/CLM	Search by: - single terms using boolean and proximity operators - phrases using implied adjacency Use limited and unlimited truncation. Left-hand truncation is available (? , #, +).	/CLM BRUECKENELEMENT? TRANSISTOR??

Patent/Publication Data

Search by	Index	Search Hints	Examples
Number, date and kind of publication	/PN	Search by: Publication number in the format: DENNNNNNNn, where DE is the country code, followed by 7 or 8 digits. If necessary, infill with hyphens. For German publications with a Date of 2004 onwards: DE is the country code, followed by 12 digits DE Patents (DEFULLB) DE Utilities (DEFULLU)	/PN DE-978074 /PN DE3923267 /PN DE10000101 /PN DE102004010568 /PN DE202004010073
Kind Codes	/PN	Kind code Truncation may be used. A1: unexamined published AP A8: corrected 1 st page A9: Corrected complete spec B1: examined (1 st publication) B2: examined (2 nd publication) B3: patent (1 st publication) B4: patent (2 nd publication) B8: Corrected 1 st page (patent) B9: corr. compl. spec. (patent) C1: granted patents (1 st publ) C2: granted patents (2 nd publ) C5: revised patent T2: translation of EP patent T3: transl. of EP patent after opp. T4: transl. of corrected EP patent T5: transl. of publ. of Int'l AP T8: corr. 1 st page transl. EP/WO pat. T9: corr. compl. spec. transl. EP/WO p U1: utility model U8: corr. 1 st page utility model U9: corr. compl. spec. utility model	/PN A1 /PN A# /PN B1 /PNB# /PN C1 /PN C# /PN T2 /PN T# /PN U1 /PN U#
Document type	/DT	Kind code definitions may be found in the /DT field. Truncation may be used	/DT EUROPAEISCHEN /DT GEBRAUCHSMUSTERSCHRIFT /DT OFFENLEGUNGSSCHRIFT /DT PATENTSCHRIFT /DT UEBERSETZUNG
Publication Date	/PN	Publication date in the format: YYYYMMDD YYYYMM YYYY Do not use the numerical operators	/PN 20050224 /PN 200502 /PN 2005
Publication Date (Rangeable)	/PD	Search by the date in the format : YYYY-MM-DD YYYY-MM YYYY Use numeric operators : =, <, >, <=, >=.	PD=2005-02-24 PD=2005-02:2005-06

Patent/Publication Data (cont.)

Search by	Index	Search Hints	Examples
First Publication Date (Rangeable)	/PD1	<p>For A1, B1, C1 and U1 publications, there is only one date of publication and it is identical in the fields /PD1, /PN and /PD. For B2 and C2 publications, /PD1 provides the 1st publication date which corresponds to the publication date of the A1 application.</p> <p>Search by date in the format YYYY-MM-DD YYYY-MM YYYY</p> <p>Use numeric operators : =, <, >, <=, >=.</p>	PD1=2005-02-24 PD1>=2005-02 PD1<=2005
Date of Grant (Rangeable)	/DGR	<p>For B1 and C1 publications, the date is identical in the fields /DGR, /PN, /PD and /PD1. For B2 and C2 publications, the date is identical in the fields /DGR, /PN and /PD, field /PD1 containing the date of publication of the corresponding application .</p> <p>In the case of an utility model (U1), and a translation (T2), /DGR contains the date of registration.</p> <p>Search by date in the format: YYYY-MM-DD YYYY-MM YYYY</p> <p>Use numeric operators : =, <, >, <=, >=.</p>	DGR=2005-05-25 DGR>=2005-02 DGR=2005-02:2005-06
Standardized publication number	/XPN	<p>To facilitate crossfile searching with other patent databases, Questel•Orbit has created a standardized publication number which can be extracted with the MEM command and then reused as a search term with the *MEM super-term.</p>	MEM /XPN *MEM /XPN

Priority Data

Search by	Index	Search Hints	Examples
Priority Number Country Code - Date	/PR	<p>Search by :</p> <p>Priority number in the Questel•Orbit format (in square brackets) YYYYCC-NNNNNNN YYYY= year with 4 digits CC= country code NNNNNNN = priority number with 7 or 8 digits (in fill with zeros if necessary).</p> <p>Country code</p> <p>Priority date in the format : YYYYMMDD YYYYMM YYYY</p> <p>Do not use numerical operators.</p>	<p>/PR 1999JP-0142030 /PR 1999DE-2020905 /PR 1999DE-2010638 /PR 2004DE-10001738</p> <p>/PR US</p> <p>/PR 19990521 /PR 199905 /PR 1999</p>
Priority Date (Rangeable)	/PRD	<p>Search by the date in the format: YYYY-MM-DD YYYY-MM YYYY</p> <p>Use numerical operators : =, <, >, =<, =>.</p>	<p>PRD=1999-05-21 PRD>=1999-05 PRD<=1999</p>
Standardized priority number	/XPR	<p>To facilitate crossfile searching with other patent databases, Questel•Orbit has created a standardized priority number which can be extracted with the MEM command and then reused as a search term with the *MEM super-term.</p>	<p>MEM /XPR *MEM /XPR</p>

EURO-PCT Published Application Data

Search by	Index	Search Hints	Examples
Publication - Number - Date	/PPN	Search by: The publication number of the PCT application using the following format: Pre Y2K: WOYYNNNNN YY = two digit year WO = Country Code NNNNN = application number with 5 digits (in fill with 0 (zeroes)) Year 2000 forward: WOYYNNNNN WOYYNNNNN YYYY = four digit year WO = Country Code NNNNN = application number with 5 digits (in fill with 0 (zeroes)) Note: PPN information is included in the standardized publication number (XPN) The application date in the following format: YYYYMMDD YYYYMM YYYY Note: Numeric operators may not be used. Note :To check for the presence of the field.	/PPN WO9008325 /PPN WO200412121 /PPN 19920917 /PPN 199209 /PPN 1992 PPN=YES
Publication Date	/PPND	Search by the date using the following format: YY-MM-DD YY-MM YYYY To search a range of dates use : (colon) Use numeric operators: <, >, <=, >=, =	PPND=2000-01-27 PPND=2000-01 PPND=2000 PPND=2004-02:2004-12 PPND>1990
PCT Application Number Number - Date	/PAP	Search by: The priority number in the Questel Orbit format (shown between the square brackets in the record): YYYYWO-CCNNNNN YYYY = four digit year WO CC = Receiving Office Country Code NNNNN = application number with 5 digits (in fill with 0 (zeroes)) The application date in the following format: YYYYMMDD YYYYMM YYYY Note: Numeric operators may not be used.	/PAP 2000WO-DK00056 /PAP 20031023 /PAP 200310 /PAP 2003

European Application & Publication Data – DEFULLT ONLY

Search by	Index	Search Hints	Examples
Application - Number - Date	/EAP	<p>Search by: The application number in the producer format: EPYYNNNNNNNN.N EP=Two letter ISO Code YY=Two digit year NNNNNN.N= application number with 6 digits, followed by a period and the last digit</p> <p>Application number in the Questel•Orbit format (in square brackets) YYYYEP-NNNNNNN YYYY = four digit year EP = Country Code NNNNNNN = do not add the period or number found after the period in the producer format. Format the application number with 7 digits (in fill with 0 (zeroes))</p> <p>Application date in the format: YYYYMMDD YYYYMM YYYY Do not use numerical operators.</p>	<p>/EAP EP88301190.0 /EAP EP88830365.8 /EAP EP88908351.5 /EAP EP89102526.4</p> <p>/EAP 1988EP-0301190 /EAP 1988EP-0830365 /EAP 1988EP-0908351 /EAP 1989EP-0102526</p> <p>/EAP 19991230 /EAP 199812 /EAP 1998</p>
Application Date (Rangable)	/EAPD	<p>Search by the date in the format: YYYY-MM-DD YYYY-MM YYYY Use numerical operators : =, <, >, <=, >=.</p>	<p>EAPD=2000-05-18 EAPD<=2000-05 EAPD>=2000</p>
Publication: - Number - Date	/EPN	<p>Search by: The publication number using the format: EPNNNNNNNN (EP code followed by the seven digit number (in fill with - (dashes) or 0 (zeroes))</p> <p>- The publication date using the format: YYYYMMDD YYYYMM YYYY Note: Numeric operators may not be used.</p>	<p>/EPN EP1421601 /EPN EP-136011 /EPN EP0136011</p> <p>/EPN 20040102 /EPN 200401 /EPN 2004</p>
Publication Date (Rangable)	/EPND	<p>Search by the date in the format: YYYY-MM-DD YYYY-MM YYYY Use numerical operators : =, <, >, <=, >=.</p>	<p>EAPD=2000-05-18 EAPD<=2000-05 EAPD>=2000</p>
Date of Publication of Amended Patent	/DPMA	<p>Search by the date in the format: YYYY-MM-DD YYYY-MM YYYY Use numerical operators : =, <, >, <=, >=.</p>	<p>/DPMA 2004-09-15 /DPMA 2004-09 /DPMA 2004</p>

Patent Assignee, Inventor, Representative

Search by	Index	Search Hints	Examples
Patent Assignee / Owner	/PA	Search by: - single terms using operators or implied adjacency. - country code appears in records from 1980 forward. Note: use /PAN with NBR, MEM & MEMS command.	/PA NORANDA /PA NORANDA AND MINES /PA NORANDA MINES /PA JP
Patent Assignee, Country	/PAC	To search by the country code from 1980 forward	/PAC JP
Inventor	/IN	Search the inventor name, with or without first name, using single terms or use the proximity operator D to combine family name and first name. Truncation may also be used. Country code present since 1980. Note: use /INN with NBR, MEM & MEMS command Note: The field IN is not present for utility models, because the German legislation does not name the inventor.	/IN YAMAMOTO /IN YAMAMOTO D SEIICHI /IN TANAKA D M+ /IN JP
Inventor, Country	/INC	Search by country code.	/INC JP
Representative	/RP	Search by single terms using operators or implied adjacency.	/RP MUELLER /RP MUELLER AND BORE /RP MUELL?? AND MUENCHEN

Classification

Search by	Index	Search Hints	Examples
International Patent Classification (IPC)	/IC	Searching /IC retrieves both the main & secondary classes.	/IC H02P-006
- main	/IC1	Search formats:	/IC1 F25J-003/04
- secondary	/IC2	- full code : ANNA-NNN/NNnnn - group : ANNA-NNN - sub class : ANNA - class : ANN#	/IC2 F25J-003 /IC1 F25J /IC2 F25#

Citations

Search by	Index	Search Hints	Examples
Cited Documents Not applicable for DEFULLT	/CT	Includes patent & bibliographic citations and may also contain references cited by the applicant Search by : standardized patent number country code author of article cited source of article cited year of publication of article cited	/CT US63799431 /CT JP /CT STEINDL /CT JOURNAL 2D CONTROL+ /CT 1993
Standardized number of cited patents in the search report Not applicable for DEFULLT	/XCT	To facilitate crossfile searching with other patent databases, Questel•Orbit has created a standardized number for cited patents which can be extracted with the MEM command and then reused as a search term with the MEM super-term.*MEM.	MEM /XCT *MEM /XCT

Other Data

Search by	Index	Search Hints	Examples
Accession Number	/AN	The accession number is the publication number followed by the kind code. You may search using limited truncation.	/AN 102004038913B3 /AN 102004038913##
Update Code Please Note: The use of UP is not authorized in DEFULLT	/UP	Search by date format: YYYY+ YYYY-SS where - YYYY = 4 digit year - SS = 2 characters week	/UP 2005+ /UP 2005-02

Current Awareness – SDI Profiles

It is possible to setup SDI (Current Awareness) profiles in the DEFULL, DEFULLA DEFULLB DEFULLU DEFULLT databases by using the SDI command after the search strategy has been created in the database. The created SDI profiles will be automatically run against each new update to the database and the results will be sent either via postal mail or email (if specified). SDI results may be delivered in TXT, PDF, RTF,XLS or XLM. Please note, images are not supported with TXT delivery

After creating your search strategy, from Qweb, click on Help and Services>Create SDI, or click on the Create SDI button at the bottom of the Qweb Screen.

You may also use command language to set up your SDI.

General Syntax: SDI<SDIname>

Please note in DEFULL you MUST specify the Survey field UP : SDI <SDIname>;EMAIL ;SURV UP
SDI<SDIname><EMAIL>;SURV<update code>;PR<format>;<options>

Specific Update Syntax:SDI <SDIname>; SURV <update code field>

SURV UP SDI <SDIname>; SURV UP database. to survey last update to the

SURV UP4 SDI <SDIname> ;SURV UP4 database. to survey updates added to the
database in a calendar month
(Monthly SDI).

Parameters:

EMAIL SDI <SDIname> EMAIL to receive SDI results via email
RTF SDI <SDIname> EMAIL RTF to include special characters,

accents etc.

RTF IMG SDI <SDIname> EMAIL RTF;PR IMG to specify record with display
image

PR <format> SDI <SDIname> EMAIL RTF;PR ABST to specify record display format

Statistical Analysis

The following patent information in the DEFULLA DEFULLB DEFULLU DEFULLT databases can be statistically analyzed:

Publication Info		Application / Priority Info		Classifications	
Patent Assignee	GET PA	Priority Country	GET PRC	IPC	GET IPC
Inventor	GET IN	Priority Date (year)	GET PR GET PRD	(Intl. Patent Classification)	
Publication Date (year)	GET PD	Application Date (year)	GET AP GET APD	Main IPC	GET MIPC
Publication Year	GET PY				
General Syntax: GET <field>					
Options:					
EMAIL	GET <field> EMAIL	to receive statistical analysis results via email			
TOPn	GET <field> TOPN EMAIL	to specify TOP N entries in the analyzed listing			
TOSEL <listname>	GET <field> TOSEL <listname> TOP N	to store the results in a personal memory			
STORE	GET <field> TOSEL<listname> STORE	to store the results permanently			
Syntax: GET ss N <field> TOSEL <listname> SAVE/STORE [TOP N, GT M]					
Example: GET PA TOP 20 EMAIL					

Document Display

Field/Index catalogues

CLMS	MCLM	CLM	CLM2	CLM3	CLM4	CLM5
PNFD	PN	FD				
PNRL	PN	FD				

File formats

STDR	PN	TI	IN	PA	AP	PR	FD	PPN
	PAP	DT	IC1	IC2	ICA	DS		
SCAN	TI							
SC	TI							
TEST	TI	IC1	IC2	ICA				
TR	TI	IC1	IC2	ICA				
MAX	PN	TI	IN	PA	AP	PR	FD	PPN
	PAP	DT	IC1	IC2	ICA	DS	RP	NOTE
	CT	AB	MCLM	CLM	CLM2	CLM3	CLM4	CLM5
FULL	PN	TI	IN	PA	AP	PR	FD	PPN
	PAP	DT	IC1	IC2	ICA	DS	RP	NOTE
	CT	AB	MCLM	CLM	CLM2	CLM3	CLM4	CLM5
FU	PN	TI	IN	PA	AP	PR	FD	PPN
	PAP	DT	IC1	IC2	ICA	DS	RP	NOTE
	CT	AB	MCLM	CLM	CLM2	CLM3	CLM4	CLM5
ALL	PN	TI	IN	PA	AP	PR	FD	PPN
	PAP	DT	IC1	IC2	ICA	DS	RP	NOTE
	CT	AB	MCLM	CLM	CLM2	CLM3	CLM4	CLM5
	DESC	DES2	DES3					
FTXT	PN	TI	IN	PA	AP	PR	FD	PPN
	PAP	DT	IC1	IC2	ICA	DS	RP	NOTE
	CT	AB	MCLM	CLM	CLM2	CLM3	CLM4	CLM5
	DESC	DES2	DES3					
BIB	PN	TI	IN	PA	AP	PR	FD	PPN
	PAP	DT	IC1	IC2	ICA			
MAXF	PN	AB	MCLM	CLM	CLM2	CLM3	CLM4	CLM5
	DESC	DES2	DES3					
ABST	PN	TI	IN	PA	AP	PR	AB	MCLM
CLMS	PN	MCLM	CLM	CLM2	CLM3	CLM4	CLM5	
DOC	PN	TI	AB	DS	AP	PR	FD	IN
	PA							
PDFR	PN	TI	PA	IN	IC1	IC2	ICA	PN
	PPN	PR	AP	PAP	FD	DS	AB	

The fields publication date (PD), priority date (PRD) and applicaton date (APD) are included respectively in the fields PN (publication number), PR (priority number) and AP (application number).

User-defined formats

Create customized format for the records display: FOR <name> <field1>...<field10>...<field20>...<field30>
(format name up to 4 characters, include up to 30 fields)

Syntax: FOR DISP PN TI PA IN AP PR PPN PAP IC DESC

Example: PRT DISP SET *or* PRT DISP SS 2 1-10

Other Display Options

It is also possible to add to these formats the image of the drawing and/or the legal status.

Example: prt max img legal

Image Display

To display an image in a record, use the IMG parameter.

Example: PRT TI IMG or PRT PD IMG Add the IMG parameter to the TI or PD field.

Example: PRT TEST IMG or PRT MAX IMG Add the IMG parameter when displaying text and image

Legal Feature

To include corresponding Legal Status record(s) from Legal Status file in the display.

Example: PRT <SS N> <format> <set, m-n> <Legal Feature>

Example: PRT SS 3 FULL 1-5 LEGAL Display records 1 thru 5 in FULL format from search statement number 3

List of Fields

All these fields are usable with commands LI, PRT, BR and =YES.

AB	Abstract
AN	Accession Number
AP	Application Number
APD	Application date
CLM	Claims
CLM2	Claims
CLM3	Claims
CLM4	Claims
CLM5	Claims
COR	Corrections
CT	Citations (patents)
DESC	Detailed Description
DES2	Detailed Description
DES3	Detailed Description
DGR	Date of grant
DPMA	Date Maint. Amnd
DS	Designated States
DT	Document Type
DTF	Translation of claims
EAP	EP Application Number
EAPD	EP Application date
EPN	European Publication
EPND	European Publication Date
FD	Filing Details
IC	Int. Patent Classes
ICA	Non Oblig. Class IPC
IC1	Main IPC
IC2	Secondary IPC
IN	Inventor, Address
INC	Inventor Country
INN	Inventor Name
MCLM	Main (first) Claim
NOTE	Declarations
PA	Assignee, Address
PAC	Assignee Country
PAN	Assignee Name
PAP	PCT Application Number
PAPD	PCT Application date
PD	Publication Date
PD1	First Issue Date
PN	Patent Number
PPN	PCT Publication
PPND	PCT Publication Date
PR	Priority Number
PRD	Priority Date
PRD1	Date
RP	Representative, Address
TI	Title
UP	Update Code
UP4	Monthly Update Code
XAP	Xapplication Number
XCT	Xcitation Number
XPN	Xpatent Number
XPR	Xpriority Number