

EPPATENT

European Patents

■ Contents:

All published applications of European Patents and EURO-PCT in all patentable fields, containing:
 Complete bibliographic, administrative and legal information giving all the details concerning the European Patent procedure and the legal status in France.

Patent drawings are also available.

■ Coverage:

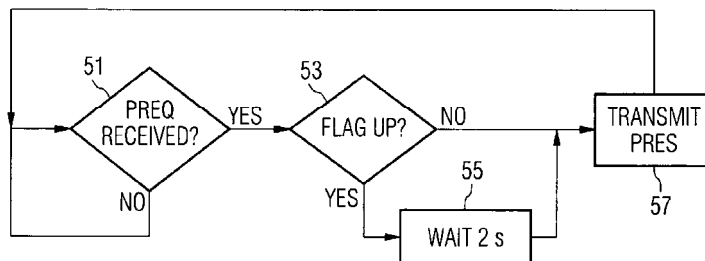
Since 1978

- Number of records:** More than 1,600,000 records
More than 835,000 images
- Updating:** Weekly
- Language of records:** French, English, German
- Cluster searching:** EPPATENT is included in the predefined PATENTS cluster (FILE CL PATENTS, FILE PATENTS).
- SDI Profiles:** Weekly
Monthly
- Document delivery:** Available using QWEB PDS
- Producer:** Questel•Orbit
EPO and INPI

Sample Record

1/1 EPPATENT - (C) Questel.Orbit- image
 PN - EP1619914 A1 20060125 [EP1619914]
 AP - EP04017034 20040719 [2004EP-0017034]
 BPN - 2006-04
 ET - A method of operating a portable communication device, and a portable communication device
 FT - Procédé de fonctionnement d'un dispositif de communication portable, et un dispositif de communication portable
 GT - Verfahren zum Betrieb eines tragbaren Kommunikationsgerätes, und ein tragbares Kommunikationsgerät
 PNAB- A method of operating a portable communication device (101), wherein: in response to receiving a paging request (PREQ) from a cellular network (100) over a first communication channel (GSM) the portable communication device (101) i) discards the paging request (PREQ), or ii) delays transmitting a paging response (PRES), if the portable communication device (101) has an established GPRS PDP context on a second communication channel (GPRS) requiring an action (K1) that can be performed within a predefined time. (see diagramm)
 ECLM- 1. A method of operating a portable communication device (101) in response to receiving a paging request (PREQ) from a cellular network (100) over a first communication channel (GSM), characterized by the step of: delaying the transmitting a paging response (PRES), if the portable communication device (101) has an established packet switched connection on a second communication channel (GPRS) requiring an action (K1) that can be performed within a predefined time.
 FCLM- 1. Procédé de fonctionnement d'un dispositif de communication portable (101) en réponse à la réception d'une demande d'appel radio (PREQ) d'un réseau cellulaire (100) sur un premier canal de communication (GSM), caractérisé par l'étape consistant à : différer la transmission d'une réponse d'appel radio (PRES) si le dispositif de communication portable (101) a une connexion à commutation de paquets établie sur un second canal de communication (GPRS) nécessitant une action (K1) qui peut être exécutée dans un délai prédéfini.
 ICAA- H04Q-007/38 [2006-01 A F I B H EP]
 ICCA- H04Q-007/38 [2006 C F I B H QO]
 DS - AT BE BG CH CY CZ DE DK EE ES FI FR GB GR HU IE IT LI LU MC NL PL PT RO SE SI SK TR
 - AL HR LT LV MK (Updated 2006-09)
 PNDS- AT BE CH DE DK ES FR GB GR IT LI LU NL SE MC PT IE SI LT LV FI RO MK CY AL TR BG CZ EE HU PL SK HR
 PA - SIEMENS AKTIENGESSELLSCHAFT / Wittelsbacherplatz 2 / 80333 München (DE)
 IN - Flint, Ludger / Blagranvej 19 / 9800 Hjørring (DK)
 DRR - 2006-01-25 Search report
 RR - Cited in the search report
 - US2004092252(A1)(Cat. A); US2002111167(A1)(Cat. A)
 ; US2002061756(A1)(Cat. A); WO02093944(A)(Cat. A)
 BRR - 2006-04
 DREX- 2004-12-20 Request for examination (Updated 2006-04)
 DGR - 2006-03-01 Grant (Updated 2006-09)
 BGR - 2006-09 (Updated 2006-09)
 NGR - B1 (Updated 2006-09)
 NOTE- Amended claims in accordance with Rule 86 (2) EPC.
 PNL - En
 APL - En
 PCL - En

FIG 5



Searching

Basic Index (default index)

Search by	Index	Search Hints	Examples
Terms from the Basic Index	/BI (default)	<p>The Basic Index contains following fields:</p> <ul style="list-style-type: none"> - title (ET, FT, GT) - abstract (EAB, FAB) - claims (ECLM, FCLM) - classification (IC1, IC2) - drug name (MED) <p>These fields are searchable without using a prefix.</p> <p>Search by:</p> <ul style="list-style-type: none"> - single terms using boolean and proximity operators - phrases using implied adjacency <p>Use limited and unlimited truncation. Left-hand truncation is available.</p>	<p>PLAYING W SURFACE?</p> <p>ANIONIC EMULSIF+</p> <p>+INFLAM?AT+</p> <p>A61K-007</p> <p>LACTITOL</p>
Words from the title	/ET (ou /TI) /FT /GT	<p>Search by single terms or phrases:</p> <ul style="list-style-type: none"> - English title (ET) - French title (FT) - German title (GT) 	<p>/ET ALPINE AND (SKI 2W BINDING)</p> <p>/FT (FIXATION? 3W SKI) AND ALPIN</p> <p>/GT BINDUNG AND ALPINSKI</p>
Words from the abstract (1) <i>English translation available 3 months after the publication date</i> (2) <i>French translation available 2 or 3 months after the publication date</i> <i>Until that, EAB and FAB stay in the publication language.</i>	/EAB (1) (or /AB) /FAB (2)	<p>PNAB included in the MAX display format is the abstract published in one of the three legal languages (German, English or French). It is not included in the Basic Index.</p> <p>Search by single terms or phrases from:</p> <ul style="list-style-type: none"> - the English abstract (English translation of the original abstract, if it is French or German (1) or the original abstract if it is English) - the French abstract (French translation of the original abstract, if it is English or German (2) or the original abstract if it is French) 	<p>/EAB MAGNETIC RESONANCE</p> <p>/FAB RESONNANCE MAGNETIQUE</p>

Basic Index (cont'd)

Search by	Index	Search Hints	Examples
Words from the first claim of the granted patent (B1)	/ECLM /FCLM	Search by single terms or phrases from: - the first claim, in English (ECLM) or - the first claim, in French (FCLM)	/ECLM BOOT? AND (SUPPORT? W PLATE) /FCLM CHAUSSURE? AND (PLAQUE? 2W APPUI)
Drug name	/MED	Search on the name of the medicine (International Non-proprietary Name or Proprietary Medicine) by single terms or phrases.	/MED SERTRALINE /MED ZOLOFT
International Patent Classification (IPC v 8) PD>=2006 Note: Not all attributes will be available for all codes. Questel Orbit will output what is delivered to us by the patent offices	/IC /ICAA /ICAI /ICAN /ICCA /ICCI /ICCN	IPC All IPC v8 and historical IPC Advanced All IPC Advanced Inventive IPC Advanced Non-Inventive IPC Core All IPC Core Inventive IPC Core non-Inventive IPC codes can be searched at different levels : - full code (ANNA-NNN/NNNN) - group (ANNA-NNN) - sub-class (ANNA) - class (ANN+ – use limited truncation)	/IC A43B-005/04 /ICAA F41H-005/007 /ICCA A23C-009/00
International Patent Classification (IPC) codes PD<=2005	/IC1 /IC2 /IC (or /CIB1 /CIB2 /CIB)	The main classification (IC1) and the secondary classification (IC2) are searchable, respectively using /IC1 and /IC2. To search for both main and secondary classifications, use /IC. IPC codes can be searched at different levels: - full code (ANNA-NNN/NNNN) - group (ANNA-NNN) - sub-class (ANNA) - class (ANN? – use limited truncation)	 /IC A63C-009/085 /IC1 A63C-009 /IC1 A63C /IC1 A63?
Additional International Patent Classification (IPC) codes	/ICA (or /CIBA)	Search by additional IPC codes: - full code - group - sub-class - class (use limited truncation) Note: for indexing codes which contain a colon ":", search by: - the full code, using quote marks - the group, followed by ":"	/ICA A01N-037/34 /ICA A01N-037 /ICA A01N /ICA A01? /ICA "A01N-031:16" /ICA A01N-031:

Other Classification Indexes

Search by	Index	Search Hints	Examples
European Classification (ECLA)	/EC	<p>Search the ECLA classification at the following levels:</p> <ul style="list-style-type: none"> - full code - group - sub-class - class (use limited truncation) <p>For indexing codes, search by:</p> <ul style="list-style-type: none"> - the full code, using quote marks - the group, followed by ":" <p>To combine main and complementary classifications, use the P operator.</p> <p>Complementary code preceded by the sign & is also searchable.</p>	<p>/EC A46B-001/00 /EC A46B-001 /EC A46B /EC A46?</p> <p>/EC "C07D-285:00C" /EC C07D-285:</p> <p>/EC "C07D-285:00C" P C07D-513</p> <p>/EC &D12 /EC &D</p>
ICO classification (In Computer Only)	/ICO	<p>Classification derived from ECLA European classification and used by the EPO examiners for:</p> <ul style="list-style-type: none"> - the less important characteristics, or - the additional characteristics, if there is no ECLA specific group. <p>ICO symbols have the same structure as ECLA symbols, with a different first letter: instead of A, B, C, D, E, F, G and H, the letters K, L, M, N, P, R, S and T are used.</p> <p>Search at the following levels:</p> <ul style="list-style-type: none"> - full code - group - sub-class - class (use ? truncation symbol) <p>Note: definitions of ICOs available is the ECLA database.</p>	<p>/ICO T01F-007/18B2 /ICO T01F-007 /ICO T01F /ICO T01?</p>
EPO Classification (Dutch)	/IDT	Search the old EPO Dutch classification	/IDT B62DD
Berlin Classification	/ICB	Search the old EPO Berlin classification	/ICB A47K-010/16

Patent Assignee, Inventor, Representative

Search by	Index	Search Hints	Examples
Name of the patent assignee or owner	/PA (or /DEP, /PAW)	Search by single terms (operators) or by phrases (implied adjacency). In the case of a property transmission, the name of the new owner has been added since 1987. Note: Use /PAN with the NBR (=IND), MEM and MEMS commands.	/PA SALOMON NBR /PAN UNILEVER
Country of the patent assignee	/PAC (or /ADEP)	Search by country code.	/PAC FR
Name of the licensee	/LC (or /LIC, /LCW)	Search by single terms (operators) or by phrases (implied adjacency). Note: Use /LCN with the NBR (=IND), MEM and MEMS commands.	/LC MORTEO SOPREFIN NBR /LCN
Country of the licensee	/LCC (or /ALIC)	Search by country code.	/LCC IT
Name of patent assignee, owner, licensee	/PLW	This super-index enables you to search the /PA and /LC indexes simultaneously.	/PLW SALOMON
Name of the inventor	/IN (or /INV, /INW)	Search the inventor name, with or without first name, using single terms or phrases. Use the proximity operator D to combine family name and first name. Note: Use /INN with the NBR (=IND), MEM and MEMS commands.	/IN MERINO D JEAN FRANCOIS NBR /INN DUPONT
Country of the inventor	/INC (or /AINV)	Search by country code.	/INC FR
Inventor, patent assignee, licensee	/IND	This super-index enables you to search the /PA, /LC and /IN indexes simultaneously. Search by single terms. Note: This field is useful for searching for a person.	/IND MERINO
Representative name	/RP (or /MND, /RPW)	Search by single terms (operators) or by phrases (implied adjacency). Use the proximity operator D to combine family name and first name. Note: Use /RPN with the NBR (=IND), MEM and MEMS commands.	/RP SORRELL D TERENCE NBR /RPN
Representative country	/RPC (or /AMND)	Search by country code.	/RPC GB

Publication Data

Search by	Index	Search Hints	Examples
Publication Number: - Number - Date - Status	/PN (or /NPD, /NPN, /PUB)	Search by: the publication number in the format: - EPNNNNNN (EP code followed by the number with a various number of figures) - or NNNNNNN (7-digit number without EP code); if the number has less than 7 digits, add as many zeros as required to reach 7 digits. the publication date in the format: YYYYMMDD YYYYMM YYYY a single letter and one number code: A1: published with search report A2: published without search report	/PN EP692288 /PN 0692288 /PN 19960117 /PN 199601 /PN 1996 /PN A1 /PN A2
Publication date	/PD (or /DPD, /PY)	Search by the date in the format: YYYY-MM-DD YYYY-MM YYYY Use numeric operators: <, >, <=, >=, =.	PD=1999-01-06 PD=1995-01:1996-06 PD>=1997
Bulletin number	/BPN (or /BPD, /UP)	Search by the bulletin number for publication of application in the format YYYY-WW (year followed by the week number).	/BPN 1998-20 /BPN 1998+
Publication language	/PNL	Search by two-letter code of the publication language.	/PNL EN
Procedure language	/PCL	Search by two-letter code of the procedure language.	/PCL FR
Designated states in the first publication	/PNDS	Search by two-letter code of the countries designated in the first publication.	/PNDS CH
Designated states	/DS (or /DSG)	Search by two-letter code of the current designated countries.	/DS AND AT,CH,DE,IT

Application Data

Search by	Index	Search Hints	Examples
Application: - Number - Date	/AP (or /EN, /AN)	Search by: the application number: - in the source format EPYYNNNNNN (EP code followed by 2-digit year and 6-digit number) or YYNNNNNN - in the Questel Orbit format (shown between square brackets in the record) YYYYEP-NNNNNN the application date in the format: YYYYMMDD YYYYMM YYYY	/AP EP95108549 /AP 95108549 /AP 1995EP-0108549 /AP 19980105 /AP 199801 /AP 1998
Application date	/APD (or /DDP)	Search by the date in the format: YYYY-MM-DD YYYY-MM YYYY Use numeric operators: <, >, <=, >=, =.	APD=1995-06-03 APD=1997-07:1997-12 APD<=1990
Application language	/APL	Search by two-letter code of the application language.	/APL FR

Priority Data

Search by	Index	Search Hints	Examples
Priority: - Number - Country - Date	/PR	Search by: the priority number: - in the source format CCYYNNNNNN (country code followed by 2-digit year and number in the application country) - in the Questel Orbit format (shown between square brackets in the record) YYYYCC-NNNNNN the country code the application date in the format: YYYYMMDD YYYYMM YYYY To combine country and date, use the P operator.	/PR FR9408940 /PR 1994FR-0008940 /PR FR /PR 19970703 /PR 199707 /PR 1997 /PR FR P 1997
Priority date	/PRD	Search by the date in the format: YYYY-MM-DD YYYY-MM YYYY Use numeric operators: <, >, <=, >=, =.	PRD=1997-06-03 PRD=1997-07:1997-12 PRD<=1985

EURO-PCT Published Applications

Search by	Index	Search Hints	Examples
Publication: - Number - Date	/PPN (or /PPUB)	Search by: PD >= 2000 The publication number of the PCT application in the format WOYYYYNNNNN or WOYYYYNNNNNN (WO code followed by 4-digit year and 5 or 6-digit number) PD <= 1999 The publication number of the PCT application in the format WOYYNNNNN (WO code followed by 2-digit year and 5-digit number) the publication date of the PCT application the format: YYYYMMDD YYYYMM YYYY Note 1: in order to know if a European patent application comes from a PCT application, use searching by presence of the field. Note 2: PPN information is included in the standardized publication number (XPN).	/PPN WO2005099198 /PPN WO2005100755 /PPN WO9806247 /PPN 19980212 /PPN 199802 /PPN 1998 PPN=YES
PCT application number	/PAP (or /PCT)	Search by the PCT application number: - in the source format: WOCCYYNNNNN (WO code followed by standardized two-letter code for the receiving office country followed by 2-digit year and 5-digit number) - in the Questel Orbit format (shown between square brackets in the record) YYYYWO-CCNNNNN	/PAP WOJP9701110 /PAP 1997WO-JP01110
Gazette number	/GAZ	Search by the PCT Gazette number of publication in the format YYYY-WW.(year followed by the week number).	/GAZ 1998-41 /GAZ 1998+

Publication, Application, Priority Data

Search by	Index	Search Hints	Examples
First application number	/PAR (or /RTN)	Number of the original application in the case of a division (art. 76): - until February 1987: application number - after February 1987: publication number	/PAR EP82104562 /PAR EP101168
Numbers	/NOS	This super-index enables you to search the /PN, /PPN, /AP, /PAP, /PR, /PAR, /XPN, /XAP and /XPR indexes simultaneously. This is useful when you are not sure what type of number you are searching.	/NOS JP20554596 /NOS 19960805

Search Report Data

Search by	Index	Search Hints	Examples
Cited documents: - Patents - Non-patent literature - Relevance category	/RR (or /CT)	Search by: - patent number of cited patents - single terms or phrases in the non-patent literature - relevance category: use the 3W operator to combine the note 'CAT' with the letter.	/RR EP653868 /RR IRON /RR PLANT JOURNAL /RR CAT 3W X
Publication date of search report	/DRR (or /DSP, /DCT)	Publication date of the search report. Search using numeric operators: >, <, >=, <=, = Use the format: YYYY-MM-DD YYYY-MM YYYY	DRR=1999-05-19 DRR>1998-09 DRR>=1998
Bulletin number	/BRR (or /BSP)	Search by the issue number for the publication of the search report in the format YYYY-WW (year followed by the week number).	/BRR 1999-20 /BRR 1999+
Date for new cited documents	/DRRN	Date on which relevant documents have been discovered after drawing up of the European search report. Search in the format: YYYY-MM-DD YYYY-MM YYYY Use numeric operators: >, <, >=, <=, =	DRRN=1999-03-29 DRRN>1998-06 DRRN>1997
Publication date of supplementary European search report	/DRRS	Search in the format: YYYY-MM-DD YYYY-MM YYYY Use numeric operators: >, <, >=, <=, =	DRRS=1999-04-16 DRRS>1998-12 DRRS>=1998

Examination Data

Search by	Index	Search Hints	Examples
Date of examination request	/DREX (or /DRE)	Date of filing of request for examination: Search in the format: YYYY-MM-DD YYYY-MM YYYY Search on the presence of the field. Use numeric operators: >, <, >=, <=, = Caution: some dates before February 1987 are erroneous or missing.	DREX=1999-02-01 DREX>1995-06 DREX<1998 DREX=YES
Date of examination report	/DNEX	Date of dispatch of first examination report: Search in the format: YYYY-MM-DD YYYY-MM YYYY Search on the presence of the field. Use numeric operators: >, <, >=, <=, = Caution: some dates before February 1987 are erroneous or missing.	DNEX=1999-04-06 DNEX>1997-06 DNEX>1997 DNEX=YES

Withdrawal, Refusal, Grant, Lapse

Search by	Index	Search Hints	Examples
Date of withdrawal of the application	/DWD	Use numeric operators: >, <, >=, <=, = Search in the format: YYYY-MM-DD YYYY-MM YYYY	DWD=1999-02-25 DWD>1997-07 DWD=1997 DWD=YES
Date on which the application was deemed to be withdrawn	/DDWD	Or search on the presence of the field.	DDWD=1998-01-18 DDWD>1998-06 DDWD>1998 DDWD=YES

Withdrawal, Refusal, Grant, Lapse (contd.)

Search by	Index	Search Hints	Examples
Date of refusal of the application	/DRF	Use numeric operators: >, <, >=, <=, = Search in the format: YYYY-MM-DD	DRF=1998-02-19 DRF<1995-06 DRF<1997 DRF=YES
Date of grant	/DGR (or /DDL)	YYYY-MM YYYY Or search on the presence of the field.	DGR=1999-03-10 DGR<1979-06 DGR<1998 DGR=YES
Nature of grant	/NGR (or /NDL)	Search by code (1 letter + 1 digit): - B1 granted patent - B2 amended patent after an opposition	/NGR B1 /NGR B2
Bulletin number of grant	/BGR (or /BDL)	Search by the issue number for the publication of the grant in the format YYYY-WW (year followed by the week number).	/BGR 1999-10 /BGR 1999+
Lapse: - Country - Year	/DLP (or /DCH)	Search by: - standardized two-letter code of the country where the patent is lapsed - year of lapse in the format YYYY To combine country and year, use the P operator. Note: Lapse occurring until the end of the opposition period.	/DLP BE /DLP 1998 /DLP BE P 1997
Lapse* in France before and after the opposition period	/DLPF (or /DCHF)	Search by: - FR code, - year of lapse in the format YYYY To combine country and year, use the P operator.	/DLPF FR /DLPF 1997 /DLPF FR P 1997

* Caution : when DPLF is present, check in the FPR field (French Patent Registry (see page 19)) if the patent is subjected to an appeal.

Data of Opposition Procedure

Search by	Index	Search Hints	Examples
Opponent: - Name - Country - Number - Date	/OPP	Search by: - single terms from the opponent's name. Use proximity operators to combine the elements. - country code of the opponent - number of oppositions against a patent - opposition year in the format YYYY - presence of the field	/OPP SCANA /OPP SCANA W LEISURE /OPP GB /OPP 01 /OPP 1986 OPP=YES
Inadmissible opposition	/OPPS	Search on the presence of the field.	OPPS=YES
Date indicating that the time period for opposition is over	/DNOP		DNOP=1999-01-07 DNOP=1998 DNOP=YES
Date of opposition rejected	/DOR	Use numeric operators: >, <, >=, <=, = Search in the format: YYYY-MM-DD YYYY-MM YYYY	DOR=1988-07-25 DOR=1988-07 DOR=YES
Date of termination of opposition procedure	/DOC	Or search on the presence of the field.	DOC=1987-02-03 DOC>1995 DOC=YES
Date of publication of amended patent	/DPMA		DPMA=1998-12-23 DPMA=YES
Bulletin of publication of amended patent	/BPMA	Search by the issue number for the publication of the amended patent in the format YYYY-WW (year followed by the week number).	/BPMA 1998-52 /BPMA 1998+
Date of revocation	/DRV	Use numeric operators: >, <, >=, <=, = Search in the format: YYYY-MM-DD YYYY-MM YYYY Or search on the presence of the field.	DRV=1998-12-20 DRV<1998-06 DRV=1995 DRV=YES

Complementary Protection Certificate (CCP)

Search by	Index	Search Hints	Examples
Complementary Protection Certificate (CCP): - CCP number - Date of the CCP	/CCP	Search by: - the presence of the field - the CCP number in the format FRYYCXXXX or YYCXXXXYY - the date in the format: YYYYMMDD YYYYMM YYYY	CCP=YES /CCP FR97C0133 /CCP 97C0133 /CCP 19971217 /CCP 199712 /CCP 1997
CCP Patent assignee	/PANC (or /DEPC)	Search by single terms from assignee's name.	/PANC BAYER
Name of medicine subject of the CCP	/MED	Search on the name of the medicine (International Non – proprietary Name or Proprietary Medicine), using single terms or phrases. Note: the MED is included in the Basic Index.	/MED SERTRALINE /MED ZOLOFT
Marketing Authorizationl (AMM): - AMM number - Date of authorization	/AMM	Search by: - the AMM number - the date of authorization in the format YYYY	/AMM PL00010/0226 /AMM 1993
Date: - of publication - of grant - deadline of validity of the CCP	/DPC /DGRC (or /DDLC) /DLVC	Use numeric operators: >, <, >=, <=, = Search in the format: YYYY-MM-DD YYYY-MM YYYY Date calculated on the basis of the application date of the patent and the date of Marketing Authorization. Updated with the date of grant of the CCP (DGRC)	DPC=1998-03-20 DPC>1997 DGRC=1993-01-08 DGRC<1995 DLVC=2005-10-27
Refusal or withdrawal of the CCP	/DWDC (or /RJTC)	Search on the presence of the field.	DWDC=YES
Amended Claims	CLMC (or /RVMC)	Search on the presence of the field.	CLMC=YES

Status of the European Patent in France

Search by	Index	Search Hints	Examples
Publication date of delivery of the French translation	/DTF	<p>Use numeric operators: >, <, >=, <=, =</p> <p>Search in the format: YYYY-MM-DD YYYY-MM YYYY</p> <p>Or search on the presence of the field.</p> <p>Note: a comment (not searchable) indicates the level of translation:</p> <ul style="list-style-type: none"> - CLMA1 (claims) - GRANTED - AMENDED (after opposition) 	<p>DTF=1999-05-21</p> <p>DTF=YES</p>
Publication date of misdelivery of the French translation	/DNTF	<p>Use numeric operators: >, <, >=, <=, =</p> <p>Search in the format: YYYY-MM-DD YYYY-MM YYYY</p> <p>Or search on the presence of the field.</p>	<p>DNTF=1999-05-07</p> <p>DNTF=YES</p>
Lapse* in France before and after the opposition period	/DLPF (or /DCHF)	<p>Search by:</p> <ul style="list-style-type: none"> - FR code, - year of lapse in the format YYYY <p>To combine country and year, use the P operator.</p>	<p>/DLPF FR /DLPF 1997</p> <p>/DLPF FR P 1997</p>
<p>Registration on the French Patent Registry:</p> <ul style="list-style-type: none"> - Registration type - Registration number - Registration year 	/FPR (or /RNB)	<p>Search by:</p> <ul style="list-style-type: none"> - the presence of the field - the registration type: <ul style="list-style-type: none"> - by single terms or phrase - by 2-letter code (see list on page 27) - the registration number (which begins with the N letter) - the registration year in the format YYYY 	<p>FPR=YES</p> <p>/FPR TOTAL TRANSFER</p> <p>/FPR TO</p> <p>/FPR N110720</p> <p>/FPR 1998</p>

* Caution : when DPLF is present, check in the FPR field (French Patent Registry) if the patent is subjected to an appeal.

Other Data

Search by	Index	Search Hints	Examples
Date of corrections	/DCOR	<p>Use numeric operators: >, <, >=, <=, =</p> <p>Search in the format: YYYY-MM-DD YYYY-MM YYYY</p> <p>Or search on the presence of the field.</p>	DCOR=1998-12-02 DCOR=YES
Date of application of request for conversion	/DCV		DCV=1980-02-06 DCV=YES
Date of receipt of request for re-establishment of rights	/DHR		DHR=1985-03-19 DHR=YES
Date of decision on request for re-establishment of rights	/DHP		DHP=1984-11-09 DHP=YES
Date of suspension of procedure in case of rule 13 or 90	/DSSP		DSSP=1995-03-13 DSSP=YES
Date of resumption in case of rule 13 or 90	/DRSP		DRSP=1998-05-20 DRSP=YES
Update codes	/UA	Necessary to survey the events of the procedure (event-related fields, see table 'specific SDI Profiles' on page 24): Search by the date in the format YYYY-WW (year followed by the week number).	/UA 1998-16 /UA 1998+
	/UC	Necessary to survey updating of the European classification codes (ECLA): Search by the date in the format YYYY-MM (year followed by the month).	/UC 1998-01 /UC 1998+
	/UD	Necessary to survey the grant of patents: Search by the date in the format YYYY-WW (year followed by the week number).	/UD 1996-12 /UD 1996+

Crossfile searching with other Questel Orbit patent databases

Search by	Index	Search Hints	Examples
Standardized publication number	/XPN	To facilitate crossfile searching with other patent databases, Questel Orbit has created a standardized publication number which can be extracted with the MEM command and then reused as a search term with the *MEM super-term.	/XPN EP-600000 MEM /XPN
Standardized application number	/XAP	To facilitate crossfile searching with other patent databases, Questel Orbit has created a standardized application number which can be extracted with the MEM command and then reused as a search term with the *MEM super-term.	/XAP 1992EP-0918623 MEM /XAP
Standardized priority number	/XPR	To facilitate crossfile searching with other patent databases, Questel Orbit has created a standardized priority number which can be extracted with the MEM command and then reused as a search term with the *MEM super-term.	/XPR 91US-748565 MEM /XPR
Standardized number of cited patents in the search report	/XCT	To facilitate crossfile searching with other patent databases, Questel Orbit has created a standardized number for cited patents which can be extracted with the MEM command and then reused as a search term with the *MEM super-term.	/XCT WO9011089 MEM /XCT

Document Display

FIELD/INDEX CATALOGUES

ABS	<---	EAB	FAB							
CLMS	<---	ECLM	FCLM							
IND	<---	PA	PAN	IN	INN	LC	LCN			
NOS	<---	PN	AP	PR	PPN	PAP	PAR	XP		
PLW	<---	PA	LC							
RSOC	<---	PA	PAN	LC	LCN					

FILE FORMATS

SCAN	<---	ET	FT	GT	ICAI	ICAN	ICCI	ICCN	IC1	IC2	ICA
SC	<---	ET	FT	GT	ICAI	ICAN	ICCI	ICCN	IC1	IC2	ICA
TR	<---	ET	FT	GT	ICAI	ICAN	ICCI	ICCN	IC1	IC2	ICA
TEST	<---	ET	FT	GT	ICAI	ICAN	ICCI	ICCN	IC1	IC2	ICA
STDR	<---	PN	AP	PPN	PAP	PR	ET	FT	GT	ICAA	ICCA
MAX	<---	IC1	IC2	ICA	DS	PA	DGR	NGR	CCP		
		PN	AP	PPN	PAP	PR	PAR	EAR	BPN	GAZ	ET
		FT	GT	PNAB	ECLM	FCLM	ICAA	ICCA	IC1	IC2	ICA
		EC	ICO	DS	PNDS	PA	IN	RP	LC	DRR	DRRN
		DRRS	RR	BRR	DCV	DWD	DDWD	DREX	DNEX	DGR	BGR
		NGR	DNOP	DRF	DHR	DHP	DSSP	DRSP	OPP	OPPS	DOC
		DOR	DRV	DPMA	BPMA	DTF	DNTF	DLPF	FPR	DLP	DCOR
		LEG	NOTE	PNL	APL	PCL	CCP	DPC	PANC	MED	AMM
		DGRC	CLMC	DLPC	DWDC	DLVC					
EVEN	<---	PN	PPN	AP	PAP	PR	PAR	LC	DRR	DRRS	DRRN
		DREX	DNEX	DWD	DDWD	DCV	DRF	DHR	DHP	DGR	NGR
		DTF	DNTF	OPP	DOR	DPMA	DRV	DOC	OPPS	DNOP	DLP
		DLPF	FPR	CCP	DPC	DWDC	DGRC	DLPC	DLVC	DCOR	DSSP
		DRSP									
CDOC	<---	PN	PPN	DGR	NGR	DTF	DNTF	XP			
CLAS	<---	ICAI	ICAN	ICCI	ICCN	IC1	IC2	ICA			
CIB	<---	ICAI	ICAN	ICCI	ICCN	IC1	IC2				
IC	<---	ICAI	ICAN	ICCI	ICCN	IC1	IC2				
MAXE	<---	PN	AP	PPN	PAP	PR	PAR	EAR	BPN	GAZ	ET
		EAB	ECLM	ICAA	ICCA	IC1	IC2	ICA	EC	ICO	DS
		PNDS	PA	IN	RP	LC	DRR	DRRN	DRRS	RR	BRR
		DCV	DWD	DDWD	DREX	DNEX	DGR	BGR	NGR	DNOP	DRF
		DHR	DHP	DSSP	DRSP	OPP	OPPS	DOC	DOR	DRV	DPMA
		BPMA	DTF	DNTF	DLPF	FPR	DLP	DCOR	LEG	NOTE	PNL
		APL	PCL	CCP	DPC	PANC	MED	AMM	DGRC	CLMC	DLPC
		DWDC	DLVC								
MAXF	<---	PN	AP	PPN	PAP	PR	PAR	EAR	BPN	GAZ	FT
		FAB	FCLM	ICAA	ICCA	IC1	IC2	ICA	EC	ICO	DS
		PNDS	PA	IN	RP	LC	DRR	DRRN	DRRS	RR	BRR
		DCV	DWD	DDWD	DREX	DNEX	DGR	BGR	NGR	DNOP	DRF
		DHR	DHP	DSSP	DRSP	OPP	OPPS	DOC	DOR	DRV	DPMA
		BPMA	DTF	DNTF	DLPF	FPR	DLP	DCOR	LEG	NOTE	PNL
		APL	PCL	CCP	DPC	PANC	MED	AMM	DGRC	CLMC	DLPC
		DWDC	DLVC								
FCCP	<---	CCP	DPC	PANC	MED	AMM	DGRC	CLMC	DLPC	DWDC	DLVC
		PN	AP								
CITE	<---	PN	RR	BRR	DRR	DRRN	DRRS				
FULL	<---	PN	AP	PPN	PAP	PR	PAR	EAR	BPN	GAZ	ET
		EAB	ECLM	ICAA	ICCA	IC1	IC2	ICA	EC	ICO	DS
		PNDS	PA	IN	RP	LC	DRR	DRRN	DRRS	RR	BRR
		DCV	DWD	DDWD	DREX	DNEX	DGR	BGR	NGR	DNOP	DRF
		DHR	DHP	DSSP	DRSP	OPP	OPPS	DOC	DOR	DRV	DPMA
		BPMA	DTF	DNTF	DLPF	FPR	DLP	DCOR	LEG	NOTE	PNL
		APL	PCL	CCP	DPC	PANC	MED	AMM	DGRC	CLMC	DLPC
		DWDC	DLVC								

Document Display (cont'd)

FU	<---	PN	AP	PPN	PAP	PR	PAR	EAR	BPN	GAZ	ET
		EAB	ECLM	ICAA	ICCA	IC1	IC2	ICA	EC	ICO	DS
		PNDS	PA	IN	RP	LC	DRR	DRRN	DRRS	RR	BRR
		DCV	DWD	DDWD	DREX	DNEX	DGR	BGR	NGR	DNOP	DRF
		DHR	DHP	DSSP	DRSP	OPP	OPPS	DOC	DOR	DRV	DPMA
		BPMA	DTF	DNTF	DLPF	FPR	DLP	DCOR	LEG	NOTE	PNL
		APL	PCL	CCP	DPC	PANC	MED	AMM	DGRC	CLMC	DLPC
		DWDC	DLVC								
PDFR	<---	PN	ET	PNL	INN	PAN	AP	PAR	PR	PPN	PAP
		DS	ICAA	ICCA	IC1	IC2	ICA	PNAB			
CLMS	<---	ECLM	FCLM								

Fields not displayed in the predefined formats (TEST, STDR, MAX, MAXF, MAXE, EVEN, CITE)

UA	Update code for events (see SDI 3)
UC	Update code for ECLA classification (see SDI 2)
UD	Update code for grant (see SDI 4)
XPN	Standardized publication number
XAP	Standardized application number
XPR	Standardized priority number
XCT	Standardized number of cited patents

Publication date (PD), application date (APD), priority date (PRD) are respectively included in the PN (publication data), AP (application data) and PR (priority data) fields.

Image Display

To display an image in a record, use the IMG parameter.

Displaying image: Add the IMG parameter to the TI or PD field.
PRT TI IMG or **PRT PD IMG**.

Displaying text and image: Add the IMG parameter to a display format.
Examples: **PRT TEST IMG** or **PRT MAX IMG**.

Specific SDI Profiles

- 1 - To survey new publications (weekly):
Enter **SV PF name ; SURV UP**
- To survey new publications (monthly):
Enter **SV PF name ; SURV UP4**
- 2 - To survey updating of ECLA classification-related fields, EC, ICB, IDT:
Enter **SV PF name;SURV UC**
- 3 - To survey event-related fields, DDWD, DGR, DLP, DLPF, DNEX, DNOP, DNTF, DOC, DOR, DPMA, DRF, DRR, DRV, DTF, DWD, FPR, OPP:
Enter **SV PF name;SURV UA**
- 4 - To survey grant field, DGR:
Enter **SV PF name;SURV UD**

Online document ordering

Available through Patent Delivery Service : www.patentdelivery.com

List of Fields

All these fields may be used with the PRT, LI, BR and =YES commands.

AMM	Drug approval
AP	Application number and date (= AN, EN)
APD*	Application date (= DDP)
APL	Application language
BGR	Bulletin number of the grant (= BDL)
BPMA	Bulletin number indicating the publication of the patent as amended
BPN	Bulletin number of the publication (= BPD, UP)
BRR	Bulletin number of the search report (= BSP)
CC*	Company code (= SIR)
CCP	Complementary Protection Certificate
CLMC	Amended Claims of the CCP (= RVMC)
DCOR	Date of publication of a correction
DCV	Date of receipt of a request for conversion
DDWD	Date of the patent was deemed to be withdrawn
DGR	Date of grant (= DDL)
DGRC	Date of grant of the CCP (= DDLC)
DHP	Date of decision of request for re-establishment of rights
DHR	Date of receipt of request for re-establishment of rights
DLP	Date of lapse (= DCH)
DLPC	Date lapse of the CCP (= DCHC)
DLPF	Date of lapse in France after the opposition period (= DCHF)
DLVC	Deadline of the validity of the CCP
DNEX	Date of dispatch of the first examination report
DNOP	Date indicating the end of the opposition period
DNTF	Date of misdelivery of the French translation
DOC	Date of termination of opposition procedure
DOR	Date the opposition was rejected
DPC	Date of publication of the CCP
DPMA	Date of publication of the patent as amended
DREX	Date of filing of request for examination (= DRE)
DRF	Date of refusal of the application
DRR	Date of search report (= DCT, DSP)
DRRN	Date of publication of new cited documents
DRRS	Date of publication of supplementary search report
DRSP	Date of resumption (rule 13 or 90)
DRV	Date of revocation
DS	Designated states (= DSG)
DSSP	Date of suspension (rule 13 or 90)
DTF	Date of delivery of the French translation
DWD	Date of application withdrawal (= RJT)
DWDC	Date of withdrawal or refusal of the CCP (= RJTC)
EAB	Abstract in English
EAR	Number of original or earlier application (Art. 61)
EC	European Classification (ECLA)
ECLM	First claim of the granted patent (B1) in English (= CLM)
ET	English title (= TI)
FAB	Abstract in French
FCLM	First Claim of the granted patent (B1) in French
FPR	Registration in the French Patent Registry (=RNB)

List of Fields (cont'd)

FT	French title
GAZ	PCT Gazette number
GT	German title
ICA	Additional IPC code
ICAA	IPC v8 Advanced All
ICAI	IPC v8 Advanced Inventive
ICAN	IPC v8 Advanced Non-Inventive
ICB	Berlin Class
ICCA	IPC v8 Core All
ICCI	IPC v8 Core Inventive
ICCN	IPC Core Non-Inventive
ICO	ICO (ECLA - In Computers Only)
IC1	Main IPC code
IC2	Complementary IPC code
IDT	Dutch Classification
IN	Inventor (name, address) (= INV, INW)
INC	Inventor Country
INN	Inventor Name
LC	Licensee (name, address) (= LIC, LCW)
LCC	Licensee Country
LCN	Licensee Name
LEG	Legal means of enforcement
MED	Name of the drug subject of the CCP
NGR	Nature of the grant (= NDL)
NOTE	Complementary information
OPP	Opponent (name, address, date)
OPPS	Inadmissible opposition
PA	Patent assignee, owner (name, address) (= DEP, PAW)
PAC	Patent Assignee Country
PACN	Certificate Owner
PAN	Patent Assignee Name
PANC	Patent assignee of the CCP (= DEPC)
PAP	PCT application number (= PCT)
PAR	Number of original application in the case of a division (Art. 76) (= RTN)
PCL	Procedure language
PD*	Publication date (= DPD, PY)
PN	Publication number, date, nature (= NPD, NPN, PUB)
PNAB	Abstract in the publication language
PNDS	Designated states at the first publication
PNL	Publication language
PPN	PCT publication number, date (= PPUB)
PR	Priority number, date (= PRD)
PRD*	Priority date
RP	Representative (name, address) (= MND, RPW)
RPC	Representative Country
RPN	Representative Name
RR	Search report (= CT)
UA*	Update code for event information
UC*	Update code for European classification
UD*	Update code for grant information
UP4*	Update code (monthly)
XAP*	Standardized application number
XCT*	Standardized number of cited patents
XPN*	Standardized publication number
XPR*	Standardized priority number

* Fields not included in the predefined display formats

List of FPR (French Patent Registry) codes

Actions affecting the existence or validity of a patent

ET	Total withdrawal
EP	Partial withdrawal
RP	Partial renunciation
RT	Total renunciation
SD	Suspension of the grant procedure
RD	Resumption of grant procedure
RR (formerly AR and RC)	Appeal for restoration
DE	Withdrawal following an appeal for restoration
DF (formerly DD, DI and BR)	Favorable ruling of INPI Director regarding an appeal
DN (formerly DD, DI and BR)	Ruling of INPI Director declaring as inadmissible or rejecting an appeal
RA	Appeal lodged with Court of Appeal
DC	Withdrawal following an appeal lodged with Court of Appeal
DA	Overruling the decision of lapse
AT	Revocation of order for ex officio conversion of a patent application into a utility certificate
TR	Final decision: rejecting a French patent application resulting from the conversion of a European patent application
AV	Other action affecting the life or validity of an industrial property title
DV	Final court decision affecting the life or validity of an industrial property title
PC	Appeal lodged with Supreme Court
CP	Application for a supplementary certificate of protection

Actions affecting the existence or validity of a patent

PT (formerly TP)	Partial transfer of ownership
TO (formerly TP)	Total transfer of ownership
TP	Transfer of ownership
CL	Licensing
RL	Cancellation of license
DL	License of right accepted
LR	License of right revoked
GC	Pledging (lien)
GR	Removal of a pledge (lien)
SN	Notice of seizure
MS	Lifting of seizure
AN	Public auction
AP	Action claiming ownership
AM	Other action affecting ownership or use of an industrial property title
DJ	Final court decision affecting the ownership or use of an industrial property title

Rectifications

CA	Address change
CD	Name or denomination change
CN	Legal status change
EM	Correction of material errors