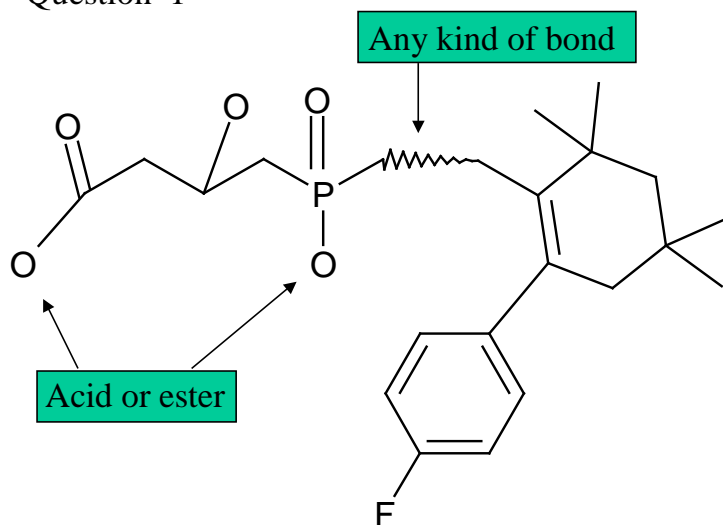


Question 1



GR (GRaph - skeleton input using: - to show connection | , to show new starting point | : to input a range of connections) Enter: node-node,node:node

AT (AToms - element symbols, Superatoms, shortcuts, G groups, X, #) Enter: label space node,node

BO (BOnds - SI, DO, TR, NO, SN, DN, X, Z; AC, CY, CX) Enter: label space node-node,node:node

FS (Free Sites - number of substitutions acceptable at a position) Enter: fnumber space node,node

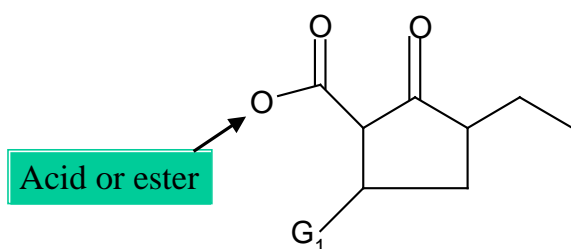
TRA (Translation Attributes - NT, BT, EQ, ANY) Enter: attribute space node,node

CR (Chain/Ring Attributes - LO, MID, HI, STR, BRA, MON, FU, SAT, UNS) Enter: attribute space node,node

VP (Variable Position)
NODE ___:
? Enter: node,node,node

AP (Attachment Points) (For G groups only)
ATT. : ATOM ___ OF GROUP NUMBER ___
NO ATOMS ? Enter: node,node,node

Question 2



$G_1 =$ H
 OH
 CN
 NH₂
 NH-alkyl
 N $\begin{cases} \text{alkyl} \\ \text{alkyl} \end{cases}$

GR (GRaph - skeleton input using: - to show connection | , to show new starting point | : to input a range of connections) Enter: node-node,node:node

AT (AToms - element symbols, Superatoms, shortcuts, G groups, X, #) Enter: label space node,node

BO (BOnds - SI, DO, TR, NO, SN, DN, X, Z; AC, CY, CX) Enter: label space node-node,node:node

FS (Free Sites - number of substitutions acceptable at a position) Enter: fnumber space node,node

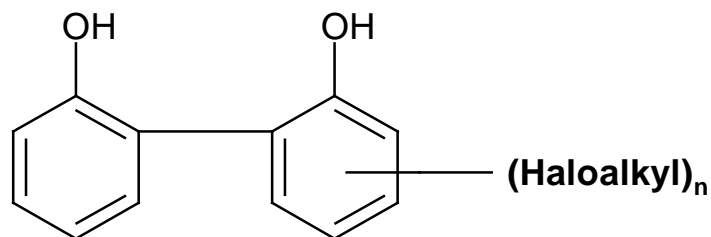
TRA (Translation Attributes - NT, BT, EQ, ANY) Enter: attribute space node,node

CR (Chain/Ring Attributes - LO, MID, HI, STR, BRA, MON, FU, SAT, UNS) Enter: attribute space node,node

VP (Variable Position)
 NODE ___ : Enter: node,node,node
 ?

AP (Attachment Points) (For G groups only)
 ATT. : ATOM ___ OF GROUP NUMBER ___
 NO ATOMS ? Enter: node,node,node

Question 3



One ring must be substituted by a monohaloalkyl and there can be up to four nodes substituted on the ring ($n = 1-4$). No other substitution is permitted anywhere. (Clue: Keep in mind that CHK cannot be used with the variable point of attachment.)

GR (GRaph - skeleton input using: - to show connection | , to show new starting point | : to input a range of connections) Enter: node-node,node:node

AT (AToms - element symbols, Superatoms, shortcuts, G groups, X, #) Enter: label space node,node

BO (BOnds - SI, DO, TR, NO, SN, DN, X, Z; AC, CY, CX) Enter: label space node-node,node:node

FS (Free Sites - number of substitutions acceptable at a position) Enter: fnumber space node,node

TRA (Translation Attributes - NT, BT, EQ, ANY) Enter: attribute space node,node

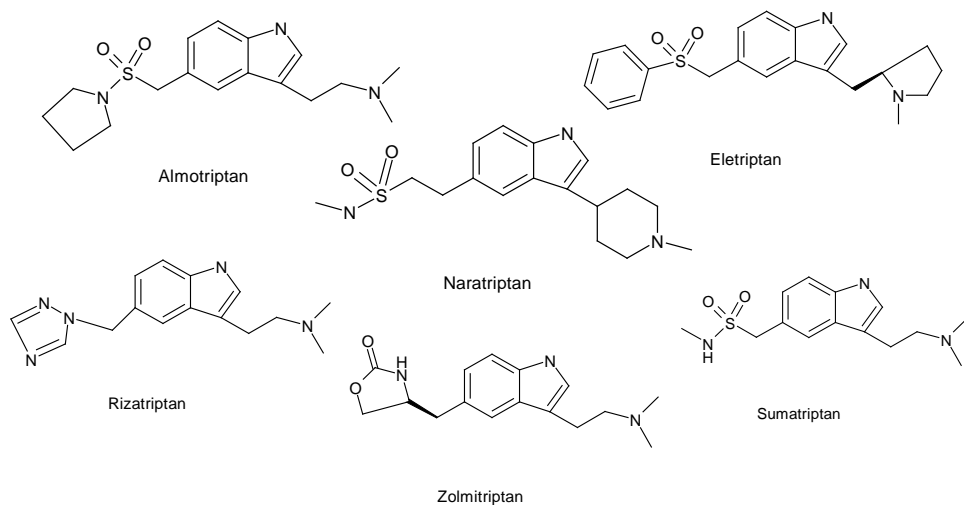
CR (Chain/Ring Attributes - LO, MID, HI, STR, BRA, MON, FU, SAT, UNS) Enter: attribute space node,node

VP (Variable Position)
NODE ___:
? Enter: node,node,node

AP (Attachment Points) (For G groups only)
ATT. : ATOM ___ OF GROUP NUMBER ___
NO ATOMS ? Enter: node,node,node

Question 4

A series of compounds for treating migraine headaches from C & News



What other compounds with the basic structure of these compounds have been used to treat migraine?

GR (GRaph - skeleton input using: - to show connection | , to show new starting point | : to input a range of connections) Enter: node-node,node:node

AT (AToms - element symbols, Superatoms, shortcuts, G groups, X, #) Enter: label space node,node

BO (BOnds - SI, DO, TR, NO, SN, DN, X, Z; AC, CY, CX) Enter: label space node-node,node:node

FS (Free Sites - number of substitutions acceptable at a position) Enter: fnumber space node,node

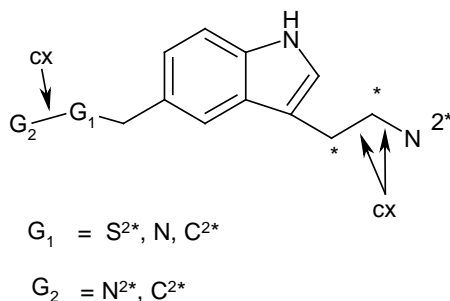
TRA (Translation Attributes - NT, BT, EQ, ANY) Enter: attribute space node,node

CR (Chain/Ring Attributes - LO, MID, HI, STR, BRA, MON, FU, SAT, UNS) Enter: attribute space node,node

VP (Variable Position)
NODE ____:
? Enter: node,node,node

AP (Attachment Points) (For G groups only)
ATT. : ATOM ____ OF GROUP NUMBER ____
NO ATOMS ? Enter: node,node,node

Question 4 - Query



GR (GRaph - skeleton input using: - to show connection | , to show new starting point | : to input a range of connections) Enter: node-node,node:node

AT (AToms - element symbols, Superatoms, shortcuts, G groups, X, #) Enter: label space node,node

BO (BOnds - SI, DO, TR, NO, SN, DN, X, Z; AC, CY, CX) Enter: label space node-node,node:node

FS (Free Sites - number of substitutions acceptable at a position) Enter: fsnumber space node,node

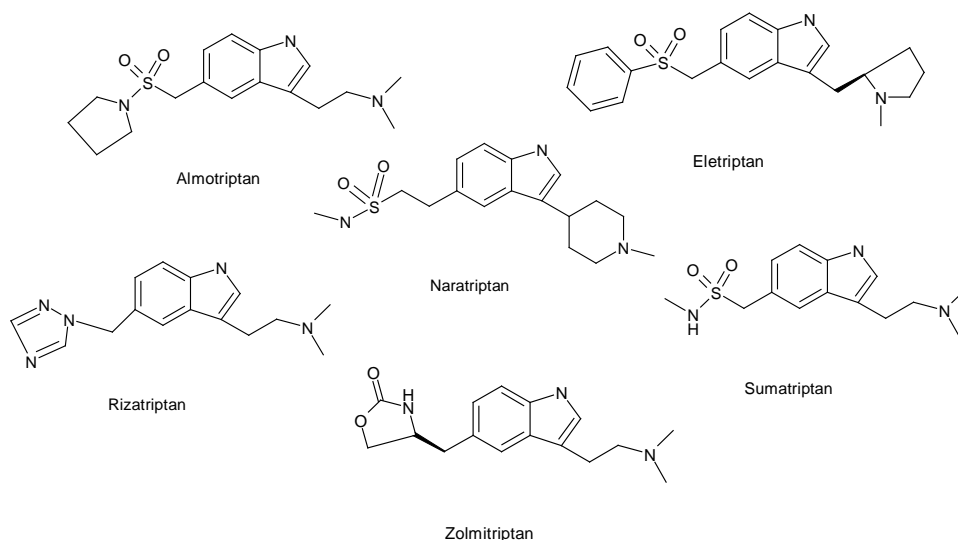
TRA (Translation Attributes - NT, BT, EQ, ANY) Enter: attribute space node,node

CR (Chain/Ring Attributes - LO, MID, HI, STR, BRA, MON, FU, SAT, UNS) Enter: attribute space node,node

VP (Variable Position)
 NODE ___ : Enter: node,node,node
 ?

AP (Attachment Points) (For G groups only)
 ATT. : ATOM ___ OF GROUP NUMBER ___
 NO ATOMS ? Enter: node,node,node

Question 5



Have any compounds of this type have been used as treatment for afflictions other than migraine?

GR (GRaph - skeleton input using: - to show connection | , to show new starting point | : to input a range of connections) Enter: node-node,node:node

AT (AToms - element symbols, Superatoms, shortcuts, G groups, X, #) Enter: label space node,node

BO (BOnds - SI, DO, TR, NO, SN, DN, X, Z; AC, CY, CX) Enter: label space node-node,node:node

FS (Free Sites - number of substitutions acceptable at a position) Enter: fnumber space node,node

TRA (Translation Attributes - NT, BT, EQ, ANY) Enter: attribute space node,node

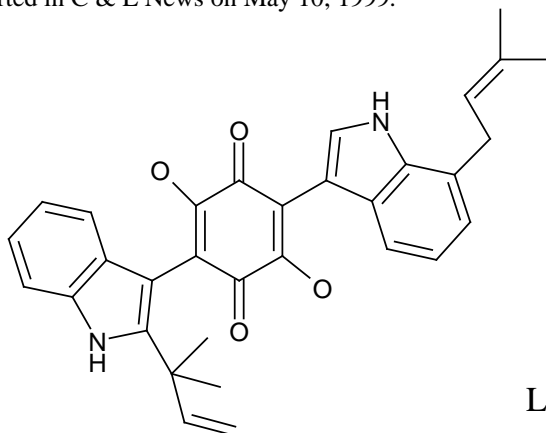
CR (Chain/Ring Attributes - LO, MID, HI, STR, BRA, MON, FU, SAT, UNS) Enter: attribute space node,node

VP (Variable Position)
NODE ____:
? Enter: node,node,node

AP (Attachment Points) (For G groups only)
ATT. : ATOM ____ OF GROUP NUMBER ____
NO ATOMS ? Enter: node,node,node

Question 6

A compound with potential activity as an oral replacement for insulin was reported in C & E News on May 10, 1999.



L-783,281

Find any patents relating to this and similar compounds.

GR (GRaph - skeleton input using: - to show connection | , to show new starting point | : to input a range of connections) Enter: node-node,node:node

AT (AToms - element symbols, Superatoms, shortcuts, G groups, X, #) Enter: label space node,node

BO (BOnds - SI, DO, TR, NO, SN, DN, X, Z; AC, CY, CX) Enter: label space node-node,node:node

FS (Free Sites - number of substitutions acceptable at a position) Enter: fnumber space node,node

TRA (Translation Attributes - NT, BT, EQ, ANY) Enter: attribute space node,node

CR (Chain/Ring Attributes - LO, MID, HI, STR, BRA, MON, FU, SAT, UNS) Enter: attribute space node,node

VP (Variable Position)
NODE ___ : Enter: node,node,node
?

AP (Attachment Points) (For G groups only)
ATT. : ATOM ___ OF GROUP NUMBER ___
NO ATOMS ? Enter: node,node,node